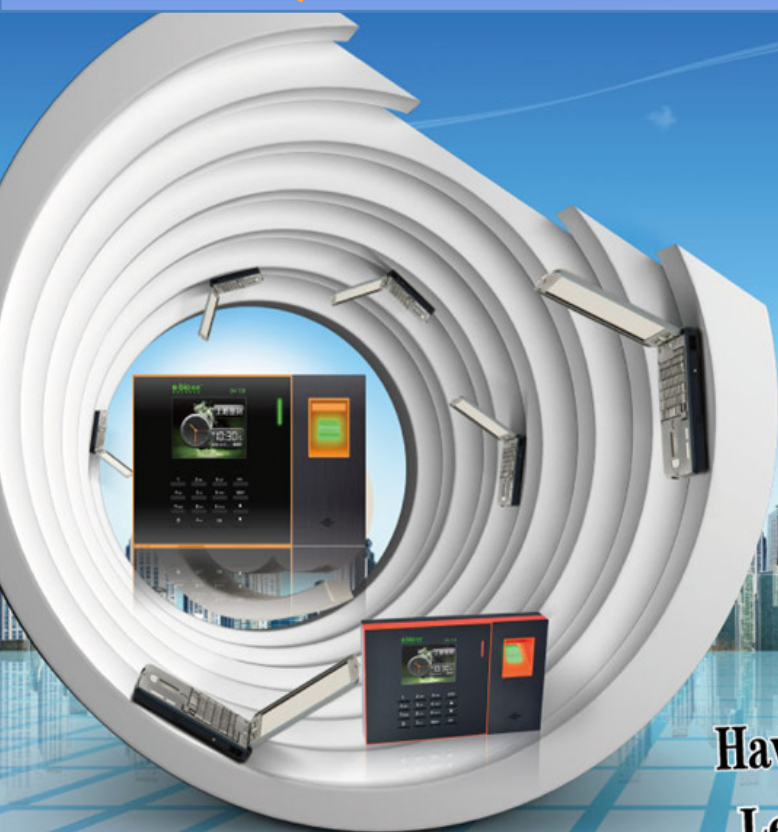


# Wan "QW Attendance machine" axpert



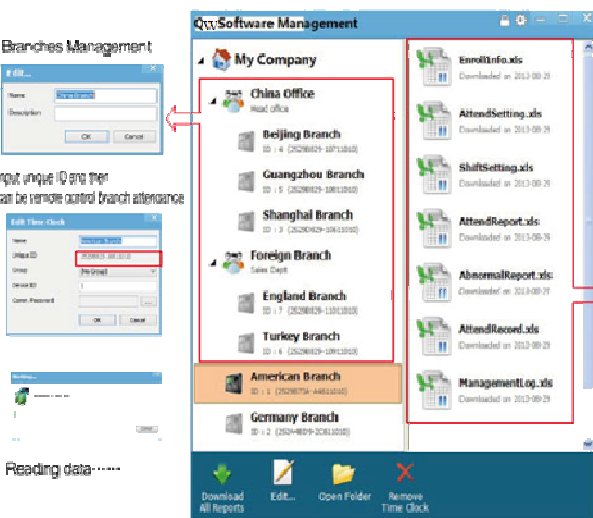
- ✓ QW working mode to remote control time attendance machine.
- ✓ There is a unique ID each QW machine.
- ✓ Small QW machine with strong attendance function, multi-machine management without limitation.
- ✓ Export Excel report directly to attendance management & summary.
- ✓ With complete, simply and clear reports.
- ✓ No training, learning and maintaining.

Have you managed your branches?  
Let **QW** machine help you right now!

## Fingerprint Time Attendance PC (Wan QW Attendance Machine)

## Axpertech QW-99

"QW machine" Time Attendance Management File—Branches management is so easy & simple!



No installation, operation directly.

Input Qw unique ID to get attendance data.

Excel reports management directly

Attendance Setting Table									
1. TR Schedule									
Overtime	Out	No.	Time (hh:mm)	Mode	No.	Time (hh:mm)	Length		
00	21:00	1	0:00	AM In	1	8:00	30sec		
		2	11:30	AM Out	2	12:00	30sec		
		3	13:30	PM In	3	14:00	30sec		
		4	17:30	PM Out	4	18:00	30sec		
		5	18:30	OT In	5	19:00	30sec		
		6	20:30	OT Out	6	21:00	30sec		

Export Excel report directly

Product Specifications:	
Model	QW- 99
Operating System	Wan Attendance Machine
Manipulation Capacity	Unlimited
Color Screen	2.8" TFT Graphic Interface
User Capacity :	
Finger	1000
Proximity (RFID)	1000
Password	1000
Record Capacity	100 000 logs
Identification Protocols	Fingerprint/ Proximity (RFID)/ Password
Language	English
LED Light Display Notification	Green Light — Granted Red Light — Denied
Voice Notification, Display (ID, Name, Part & Time) Notification on T.CD screen	Yes
Suitable for multiple In/Out Records	Yes
Raw Attendance Logs, Time Cards, Statistics Report, Abnormal Report For Late In, Early Out & Absent & Management Report.	Yes
Setting File & Report Format	Microsoft Excel
Communication Port	USB & TCP/IP
Internal Bell, Output Siren Connection & Door Access Control	Yes
Back Up Battery Ready (2 – 4 hours )	Yes
Dimension Machine (mm)	195(L) x 130(H) x 45(D)
DC Power Supply	9V
AC Power Supply	AC220V/50Hz
Working Temperature	10 – 50 °C
Working Humidity	10% – 80% RH

3S

Service